

Identification and Comment upon structure of Ovary & Testis of frog

B.Sc Part II
Subsidiary Practical Paper II A

Dr Poonam Kumari

Comments:- Testis of frog

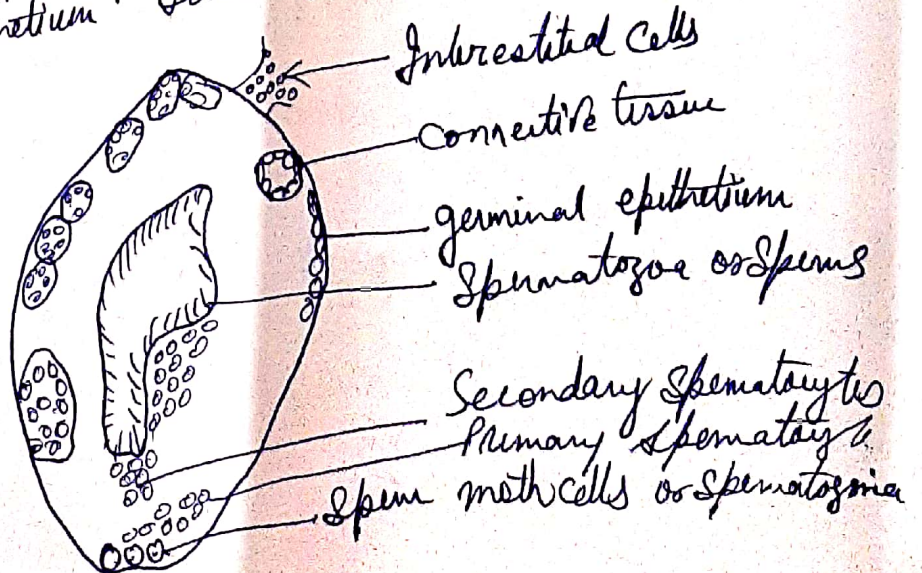
Testis are attached with kidneys by mesorchium and are also associated with fat bodies.

In high magnification various stages during spermatogenesis are closely seen.

T.S through Testis shows that it is composed of Peritoneum, Seminiferous tubules, Interstitial cells and blood vessels, Sertoli cells are absent.

Spermatogonia lie at the peripheral surface of seminiferous tubules. The primary spermatocytes are the largest cells having large nuclei. Secondary spermatocytes are smaller than primary spermatocytes. Spermatogonia are stained with hematoxylin. Spermatocytes are stained with fast green. Spermatozoa with tails are present in large number. Intertubular connective tissue contains blood vessels and interstitial cells. Testis is coated with fibrous tunica albuginea and then by peritoneal epithelium. Testis produces Sperms.

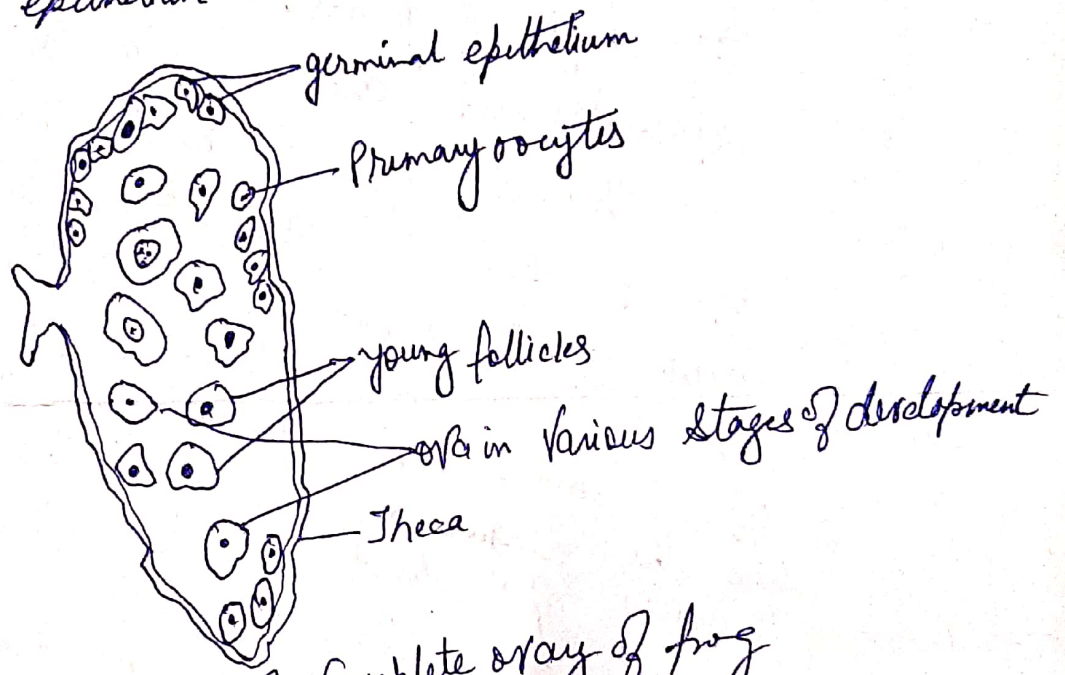
Frog - T.S of Testis



Frog: T. S. Ovary

Comments: There are two ovaries attached to kidneys by mesovarium.

1. Each ovary is composed of several hollow lobules containing developing ova.
2. Each lobule is surrounded by theca externa, which is composed of peritoneum, outer connective tissue layer and germinal epithelial layer.
3. Several follicular sacs of various sizes are connected to theca externa and the sacs originate from germinal epithelium.



T. S. of Complete ovary of frog

- ④ Various stages in the ovum formation are oogonium, primary oocyte and secondary oocyte.
- ⑤ Each ovum contains a nucleus for fertilization and granular yolk for nourishment. The ovum is released in the primary oocyte stage.